

Pancreatitis to Pancreatic Cancer Continuum

Stephen J. Pandol, MD

University of California, Los Angeles

Department of Veterans Affairs

Southern California Alcohol Research
Center for Liver and Pancreatic Diseases

UCLA Center for Excellence in
Pancreatic Diseases



Pancreatitis to Pancreatic Cancer Continuum

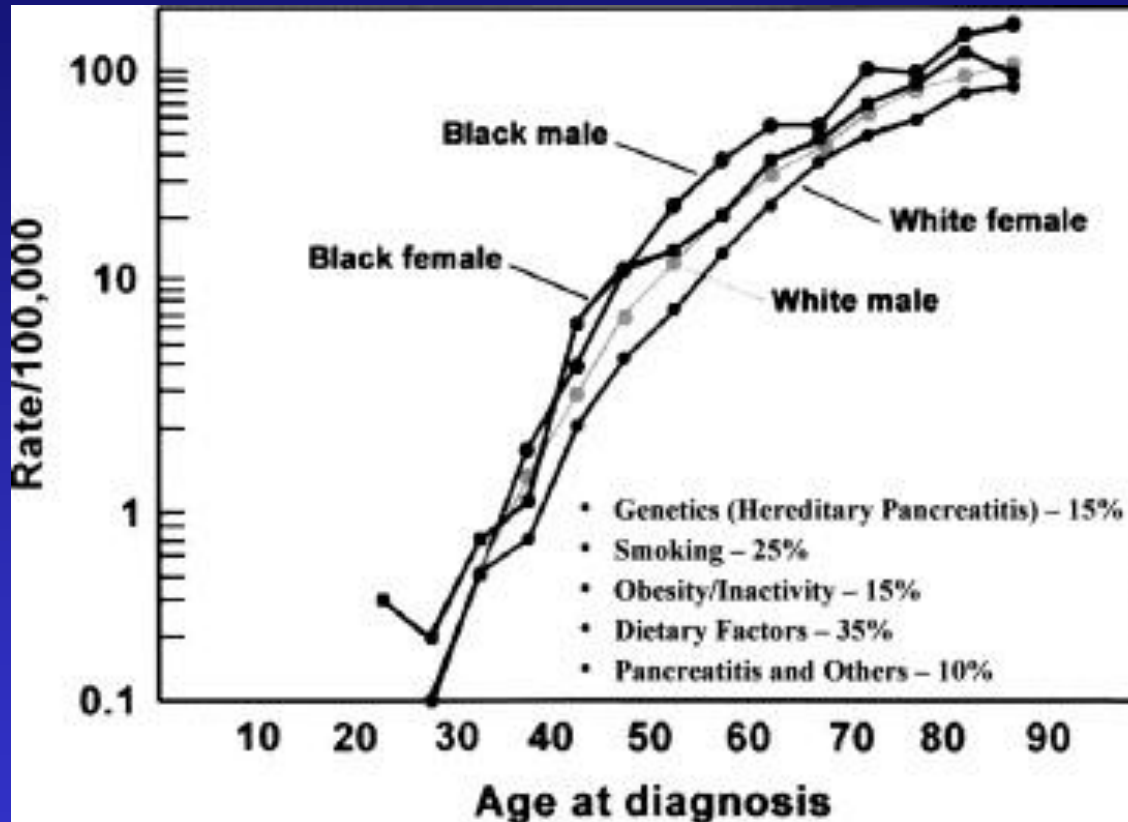
Autophagy in Pancreatitis

Anna Gukovskaya, PhD

Inflammatory Processes in Pancreatic Cancer

Guido Eibl, MD

Annual Incidence For Pancreatic Cancer



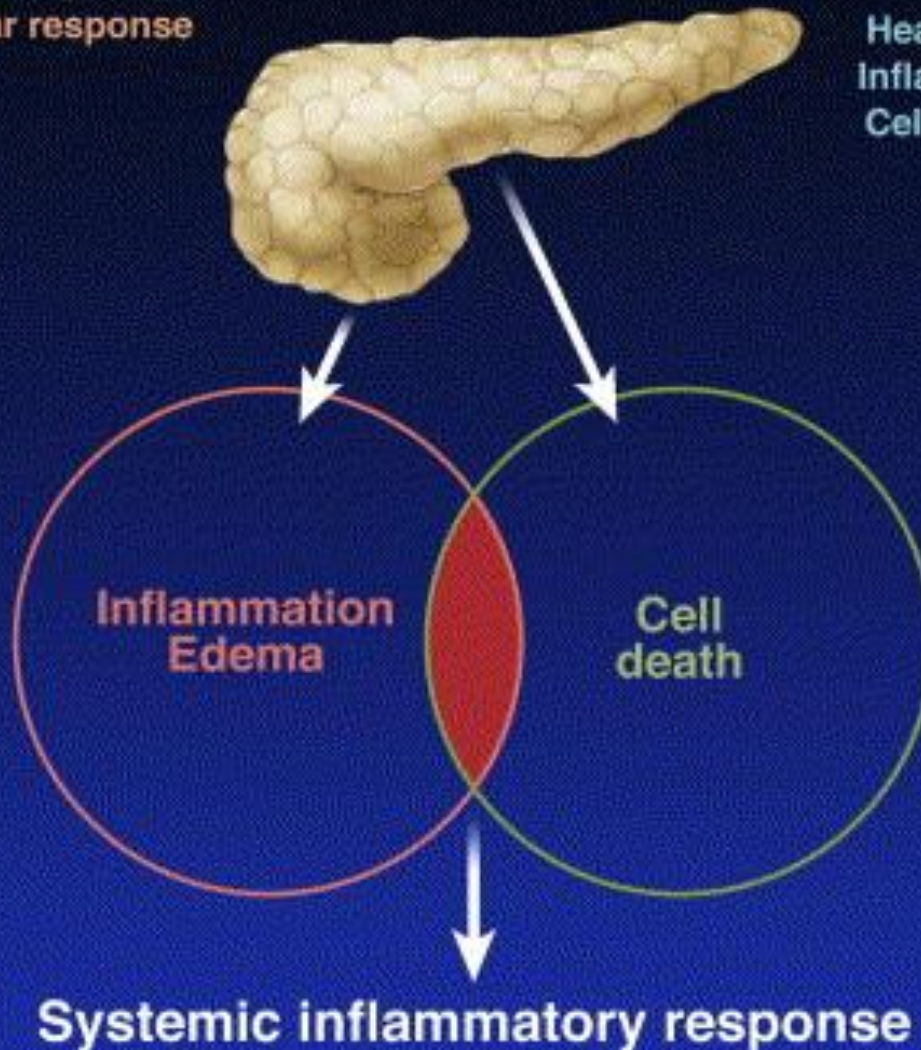
Go VLW, et al. Alcohol 35:205-211, 2005.

Extracellular factors

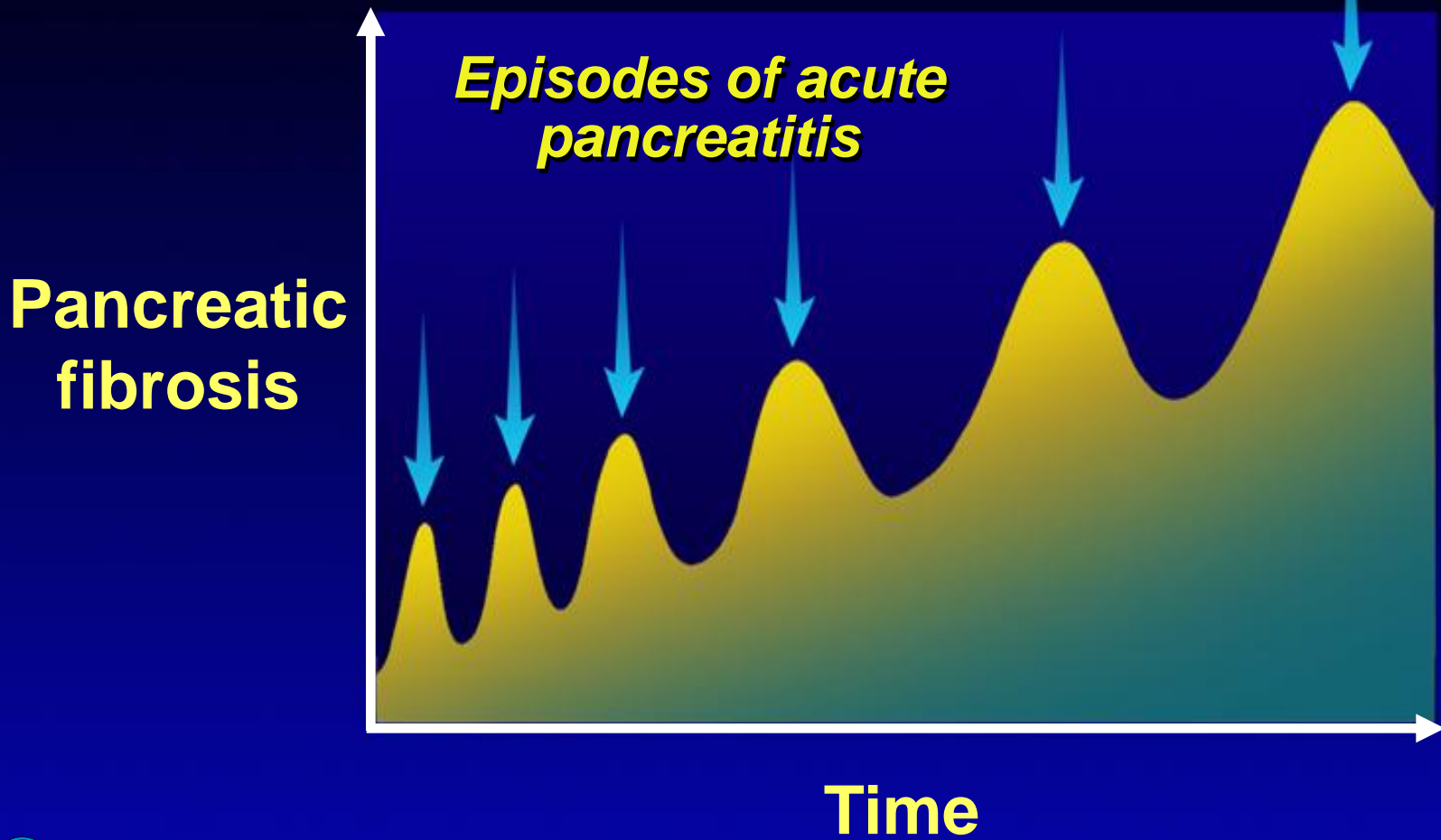
Neural response
Vascular response

Intracellular factors

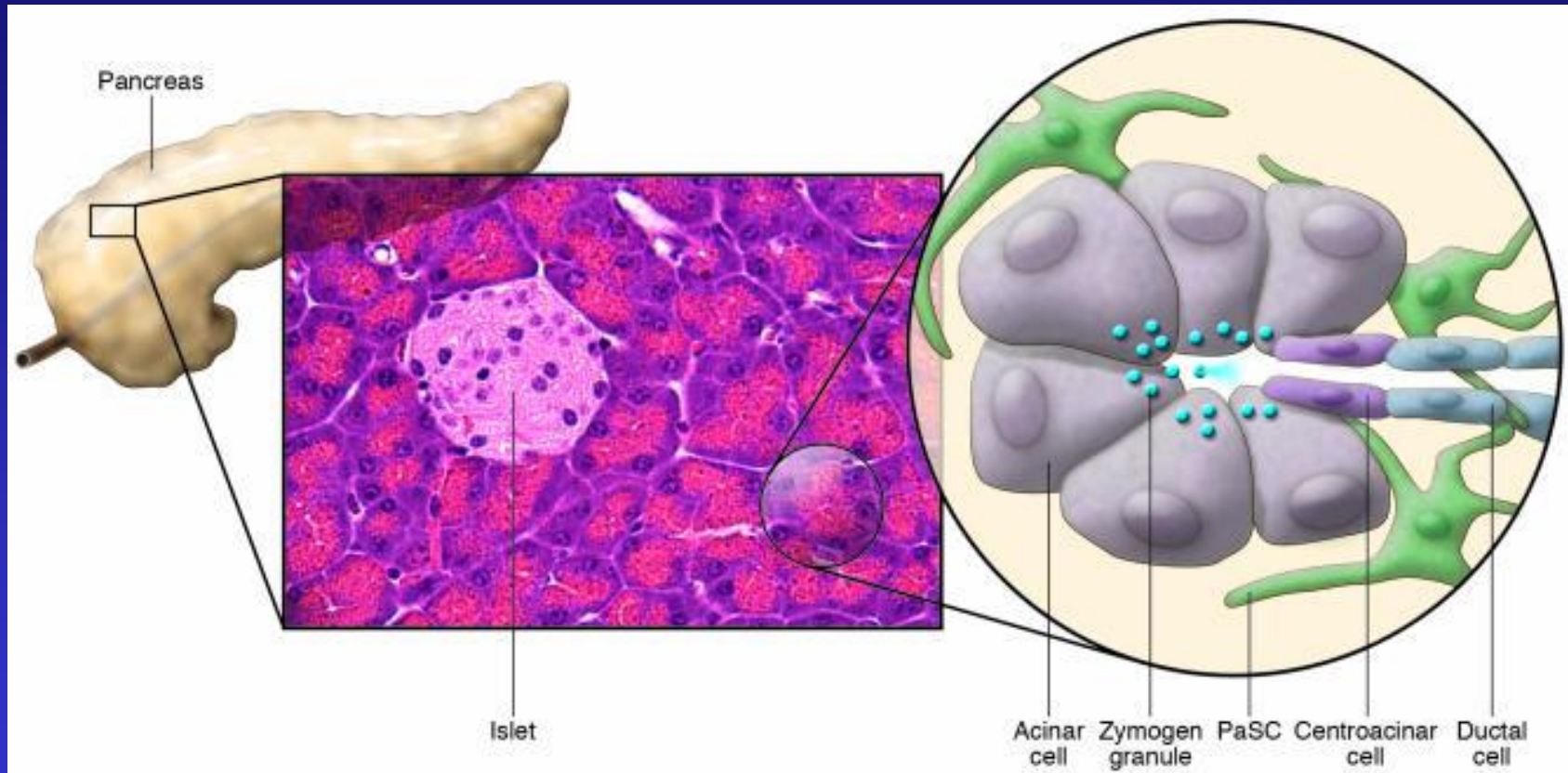
Inhibition of secretion
Intracellular digestive enzyme activation
Calcium
Heat shock proteins
Inflammatory signals
Cell death pathways



Proposed Necrosis-Fibrosis Sequence

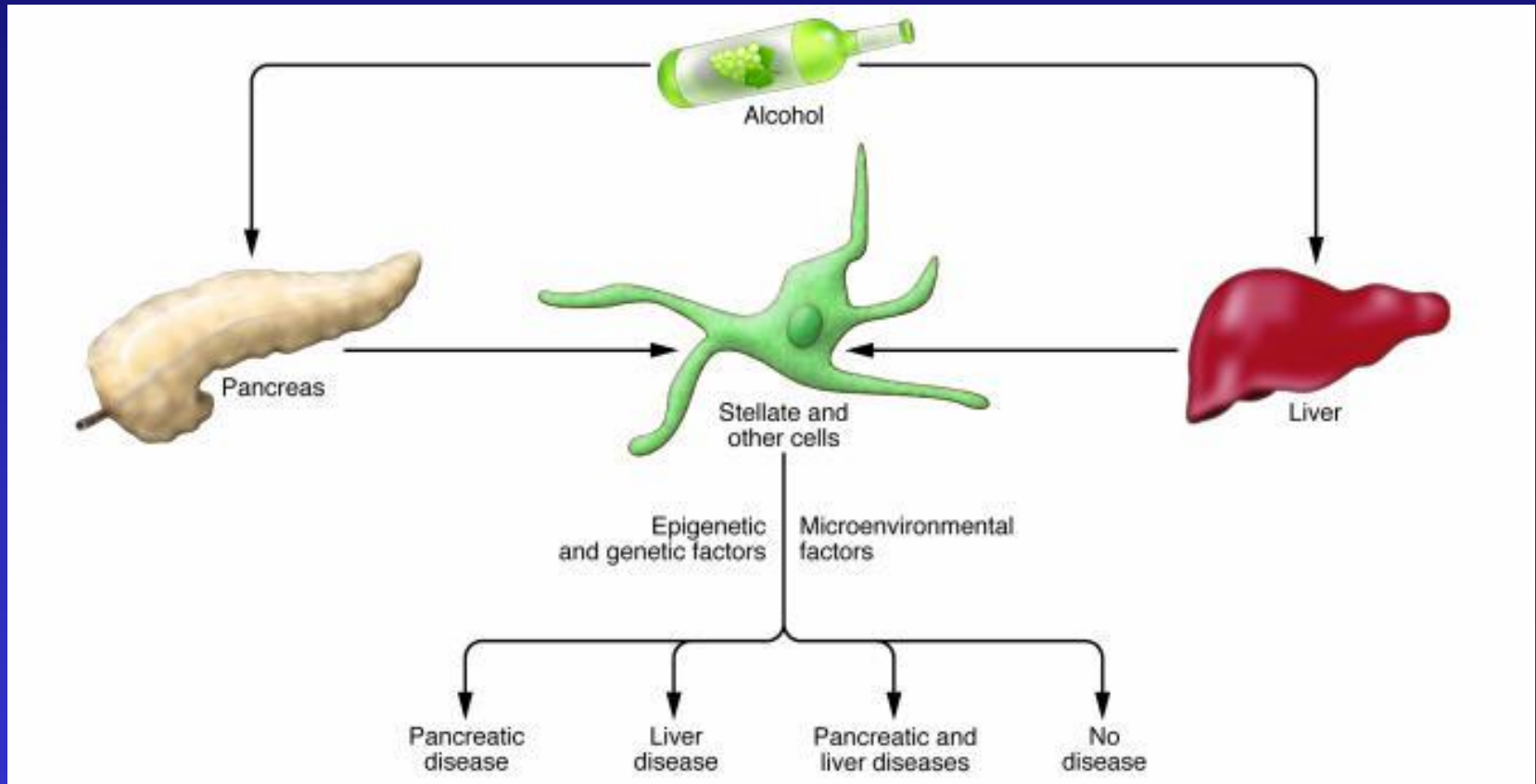


Schematic of the Cellular Components of the Exocrine Pancreas



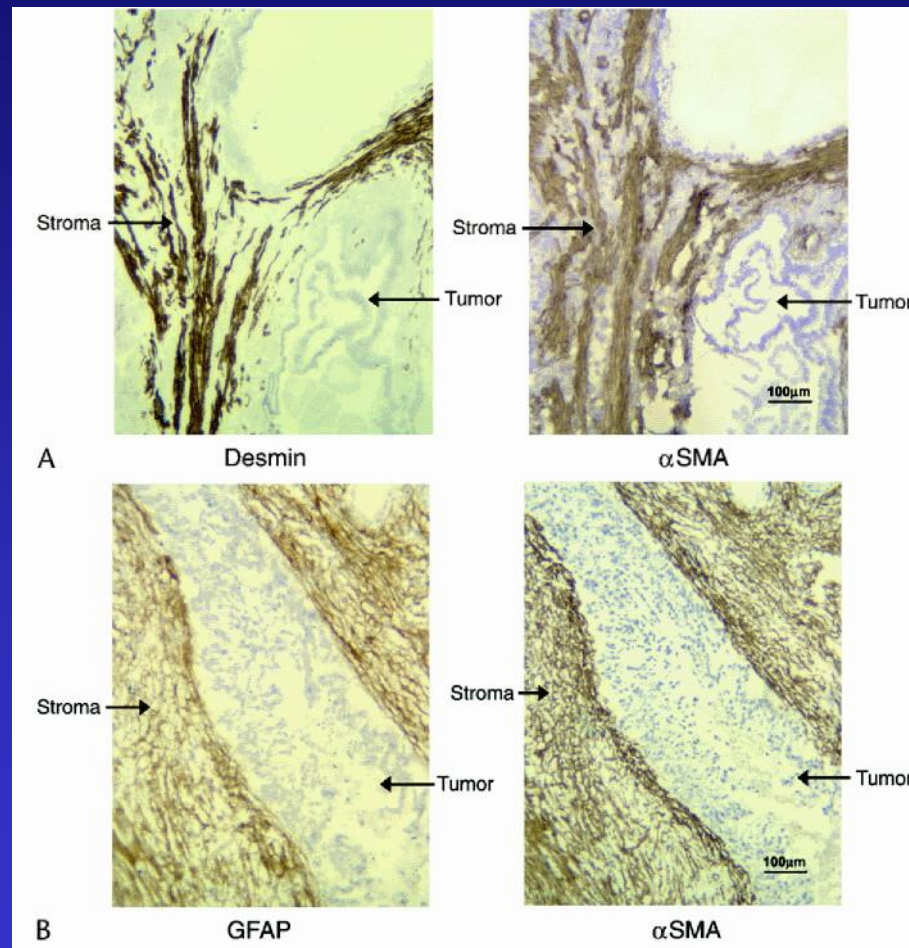
Omary MB, et al. J Clin Invest 117:50-59, 2007.

Different Impact of Alcohol on the Pancreas and Liver

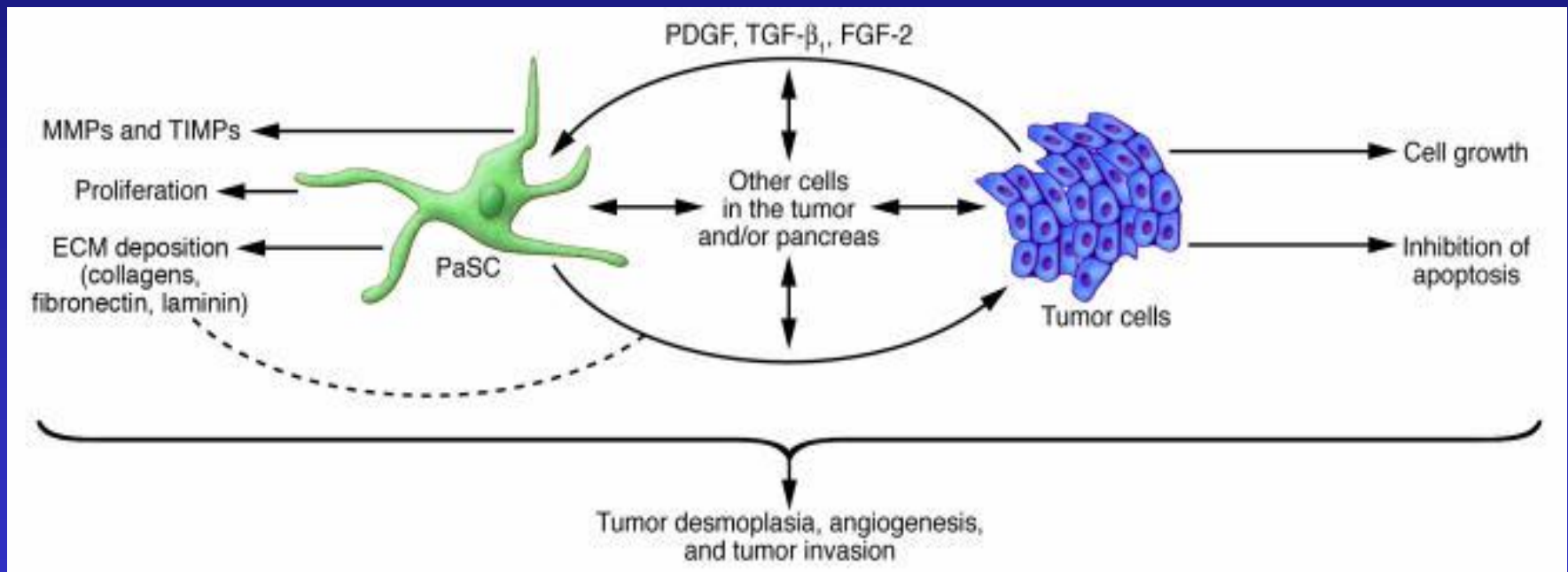


Omary MB, et al. J Clin Invest 117:50-59, 2007.

Desmin, GFAP, and α SMA Expression in Pancreatic Cancer



Effect of PaSCs on Tumor Cell Invasion and Desmoplasia



Hypothesis

- Inflammatory processes in the pancreas either generalized or localized promoted by smoking, obesity and dietary factors lead to the creation of the environment necessary of the development of pancreatic cancer. The stellate cell plays a key role in the initiation and promotion of the inflammatory environment.